

# ILLUMINATE YOUR AMBITIONS

Alu+ 110S

## REDEFINING COMMERCIAL EXCELLENCE

### 110S - STOREFRONT GLASS WALL

Elevate your commercial space to unprecedented heights with the 110S Storefront Glass Wall - an architectural masterpiece meticulously crafted to set new standards in commercial design. This versatile curtain wall system seamlessly blends style and functionality, delivering a commanding fusion of strength, adaptability, and visual allure tailored to your corporate aspirations.

## FBC & HURRICANE PROOF WINDOW:

Doorwin Hurricane Proof Window is being Tested In Accordance to the

- ✓ Florida Building Code, 8th Edition(2023)

All Units Are Tested by

- ✓ TAS 202 (Structural)
- ✓ TAS 201
- ✓ TAS 203
- ✓ Zone 4, Missile Level D at 50ft/sec to Qualify for Large Missile Impact HVHZ.



6mm+12Ar+6mm+1.78SGP+6mm  
6mm+12Ar+6mm+2.28PVB+6mm

## DOOR AND CURTAIN WALL COMBINATION



Versatile Door Combinations



Integration Possibilities

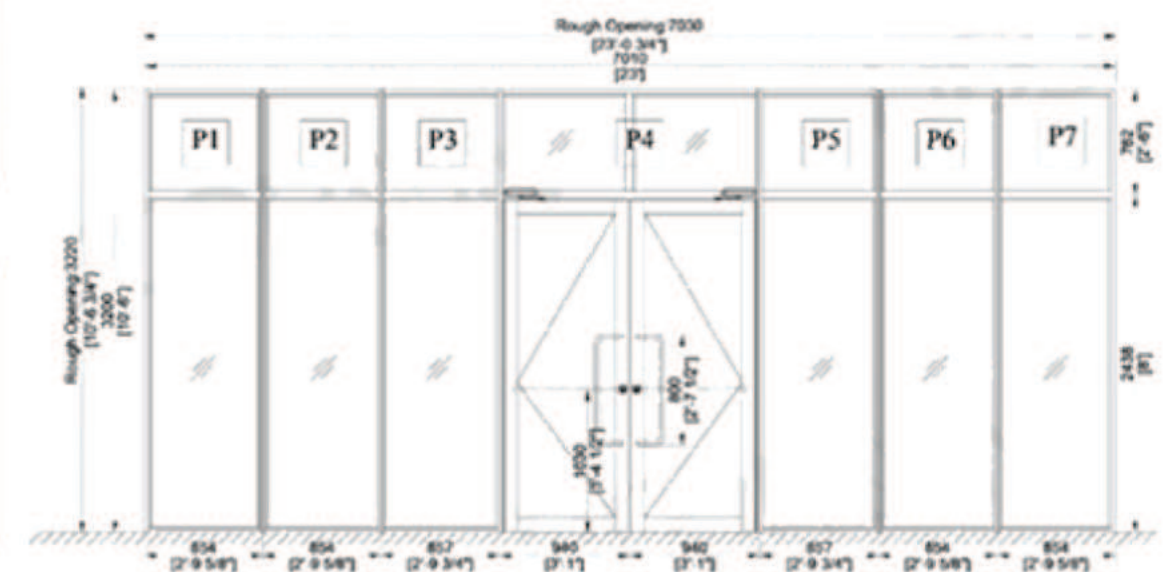


# INTEGRATION POSSIBILITIES STOREFRONT DOOR

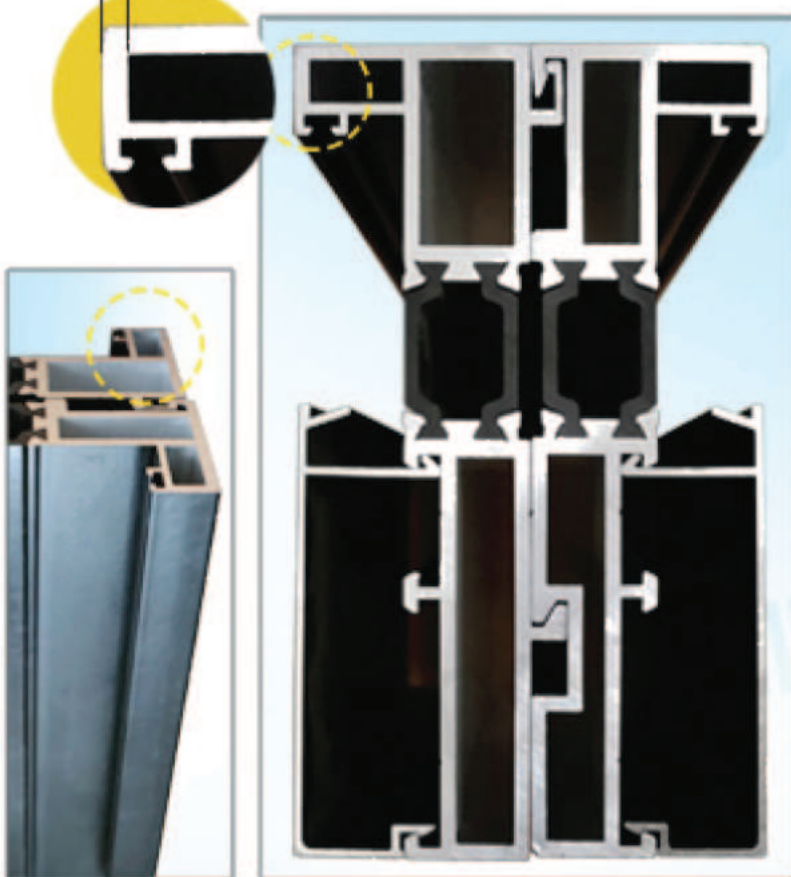


- 1 The 110s storefront allows for individual panel heights of up to **13' (4000mm)**.
- 2 Unlock your architectural ambitions with single spans of up to **8 square meters (glass configuration 10+20Ar+10)**.

Seamlessly blend diverse windows and doors into your architectural canvas. Whether it's out-swing doors or in-swing windows, the 110S Storefront effortlessly fuses with various fenestration options to accommodate your vision.



**2.0mm**



## PROFILE THICKNESS

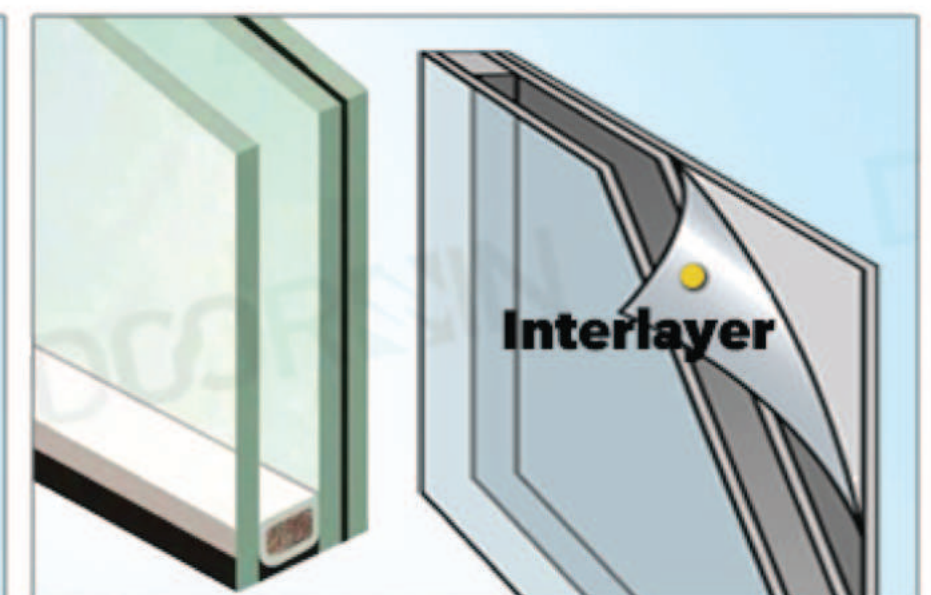
Engineered for robustness, the curtain wall boasts a substantial profile thickness of **2.0mm**, ensuring structural integrity that withstands the test of time.



## GLASS EXCELLENCE

Standard configurations include

- 1 1" (6+12Ar+6 double-pane tempered glass)
- 2 1 5/8" (6+12Ar+6+12Ar+6 triple-pane tempered glass)



- 3 (6+12Ar+6+1.78SGP+6) SGP laminated glass
- 4 (6+12Ar+6+2.28PVB+6) PVB laminated glass

All low-e coated and argon gas filled, offering optimal insulation while embracing natural light.



# STOREFRONT DOOR

## Handle Spec Sheet



**01**

*Aluminum Silver*

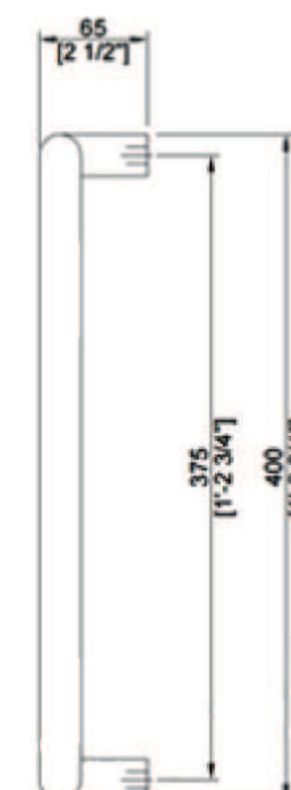
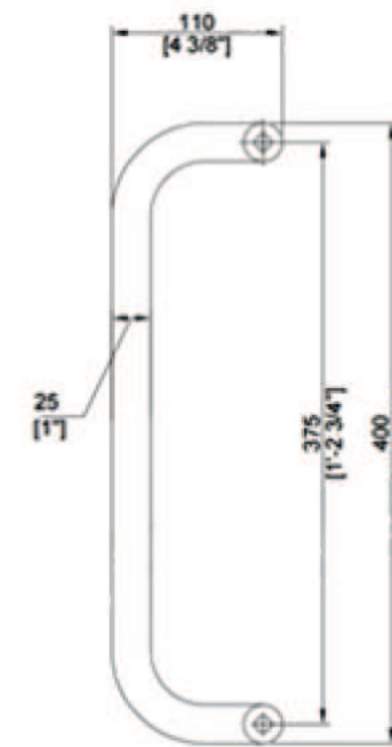


**02**

*Matte Black*



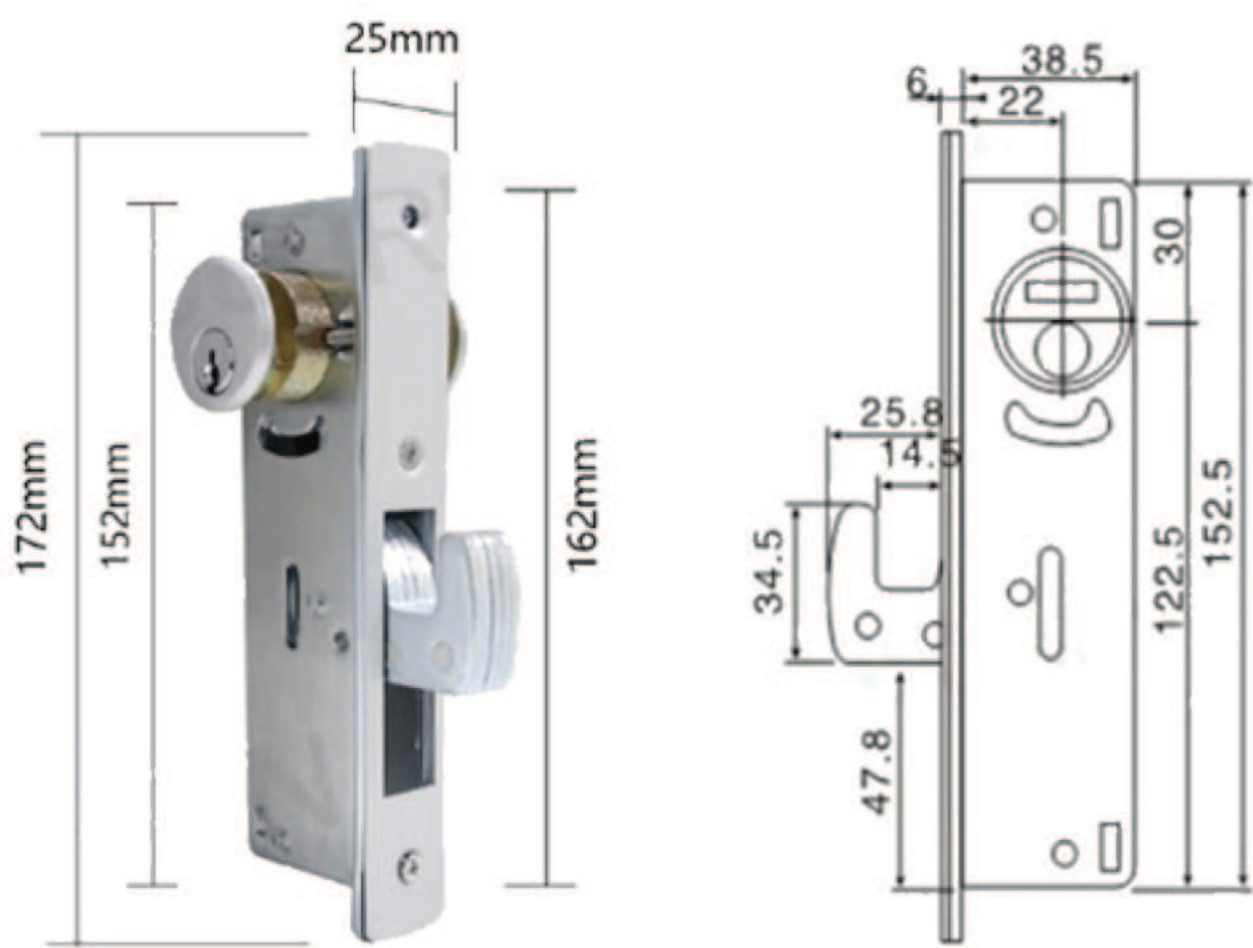
<b>Special Feature</b>	Aluminum Door Handles
<b>Handle Type</b>	Pull & Push Handle
<b>Material</b>	Solid 1" (25 mm) Diameter Aluminum
<b>Color</b>	Aluminum Silver / Matte Black
<b>Size</b>	33" * 10" Center to center
<b>Finishing</b>	Satin Finish
<b>Shape</b>	Round
<b>Included Components</b>	Mounting Hardware, Bolt
<b>Fits</b>	36" (914 mm) Narrow Stile Doors
<b>Push Bar Projection</b>	2-1/4" (57 mm) , Push Bar Center to Center (CTC): 33" (838 mm) , The Length would vary depending on the Door's Width.
<b>Pull Diameter</b>	1" (25 mm), Pull Projection: 2-1/4" (57 mm) , Pull Center to Center (CTC): 10" (254 mm)





# STOREFRONT DOOR

## Hardware & Accessories Spec Sheet



**01** Lock structure



**02** U.S Standard Lockset

<b>Special Feature</b>	Heavy Duty Aluminum Alloy Lock Body, Copper Bladder, Solid Zinc Diecast Lock Cylinders
<b>Lock Type</b>	Mortise
<b>Surface Treatment</b>	Electroplating
<b>Usage</b>	Commercial
<b>Installation Method</b>	Screw-In
<b>Size</b>	1-1/8" BACKSET
<b>Item Dimensions</b>	152mm x 162mm x 172mm
<b>Controller Type</b>	Hand Control, Mechanical knob
<b>Included Components</b>	Deadbolt Lock, Faceplate, Thumbturn, Lock Cylinder & 2 Keys
<b>Recommended Uses For Product</b>	Storefront Lock, Door Hardware, Security, Locks, Deadbolt, Commercial, Adams Rite, Kawneer, Vistawall