



## North America-Europe-Australia Certified High-end Wood & Aluminum Windows and Doors Manufacturer



Our products are manufactured in 3 wholly owned manufacturing plants. Large state of the art factories, sufficient to supply the largest projects, while remaining competitive.



## Accreditation and Certificate

Testing in Accordance to NFRC/AAMA/WDMA/NAMI 101/I.S.2/A440-11(NAFS 2011- North American Fenestration Standard/ Specifications for Windows, Doors and Skylights.)

**NFRC Product Certificate of Authorization**

<b>Manufacturer:</b> Shunfeng Doors and Windows Co., Ltd.	<b>Product Series:</b> 70 Thermal Broken Aluminum Window
<b>Street:</b> P.O. BOX 12414	<b>Product Type:</b> DATT
<b>City/State/Zip:</b> Dade, VA 06301	
<b>Simulation Lab:</b> SATF	<b>Test Lab:</b> TATW
<b>See Report #:</b> J0123-03-01-45	<b>Test Report #:</b> J0407-01-01-46
<b>See Report Date:</b> 03/25/2019	<b>Test Date:</b> 13/15/2018
<b>Revised Date:</b> 10/25/2019	<b>Revised Date:</b>
<b>Auth. Ratings:</b> U-Factor, SHGC, VT, CR, Air Leakage	<b>Test Method:</b> NFRC 102
<b>Procedural Year:</b> 2017	<b>Procedural Year:</b> 2017

**Initial Certification Date:** 05/14/2020  
**Re-Certification Date:**  
**Expiration Date:** 12/15/2024

**CFO Product Line Number:** DRA-03  
**Product Number Range:** 00001-00001 to 00018-00001

**Comments:**  
 X5409-01-001-44 Air Leakage Rpt.

I hereby certify that all requirements for NFRC Certification Authorization have been met and that the above information is true and correct, to the best of my knowledge.

**Authorized IA Signature:**

**NFRC Product Certificate of Authorization**

<b>Manufacturer:</b> Shunfeng Doors and Windows Co., Ltd.	<b>Product Series:</b> 85 T&T Turn Window
<b>Street:</b> P.O. BOX 12414	<b>Product Type:</b> DATT
<b>City/State/Zip:</b> Dade, VA 06301	
<b>Simulation Lab:</b> SATF	<b>Test Lab:</b> TATW
<b>See Report #:</b> J0123-03-01-45	<b>Test Report #:</b> J0501-01-01-46
<b>See Report Date:</b> 03/25/2019	<b>Test Date:</b> 07/03/2019
<b>Revised Date:</b> 10/25/2019	<b>Revised Date:</b>
<b>Auth. Ratings:</b> U-Factor, SHGC, VT, CR, Air Leakage	<b>Test Method:</b> NFRC 102
<b>Procedural Year:</b> 2014	<b>Procedural Year:</b> 2014

**Initial Certification Date:** 05/06/2020  
**Re-Certification Date:**  
**Expiration Date:** 07/03/2024

**CFO Product Line Number:** DRA-03  
**Product Number Range:** 00001-00001 to 00004-00001

**Comments:**  
 Air Leakage Rpt. J0501-01-01-44

I hereby certify that all requirements for NFRC Certification Authorization have been met and that the above information is true and correct, to the best of my knowledge.

**Authorized IA Signature:**

**intertek**

**TEST REPORT**

**intertek**

**COMPUTER SIMULATION REPORT**

**intertek**

**COMPUTER SIMULATION REPORT**



# Thermal Break Aluminum Windows



Aluminum windows and doors are widely used in all kinds of constructions in modern society, due to their aesthetic characteristics, durability, low maintenance, as well as thousands of color options. The thermally broken frame is insulated against heat and cold, offering perfect insulation performance and saving energy costs.





ARCHITECT SERIES DW70S  
TILT TURN WINDOW

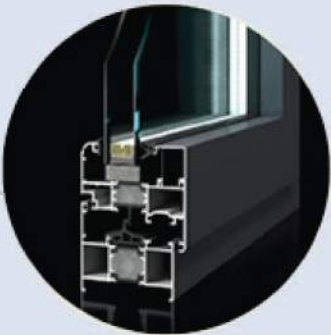






## ARCHITECT SERIES DW70S TILT TURN WINDOW

The European design tilt & turn window, unlike the traditional casement window, has two different opening types: Fully Inswing and Tilt-in, using one handle to operate. You can open it fully for maximum opening area or just tilt the sash in for ventilation purposes.



- 6 Water Tightness
- 8 Air Tightness
- 9 Thermal Insulation
- 3 Sound Proof
- 9 Wind Loading

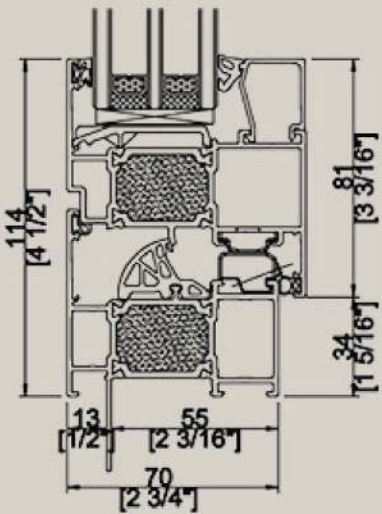
### Technical Characteristics

- Profile Thickness: 1.6–2.0 mm
- Visible Width Sash (Inside): 81 mm
- Visible Width Frame (Inside): 34 mm
- Structure Width: 70 mm

### Hardware



[Choose More Colors...](#)







**MINIMALISM SERIES DW80S**  
**TILT TURN WINDOW**







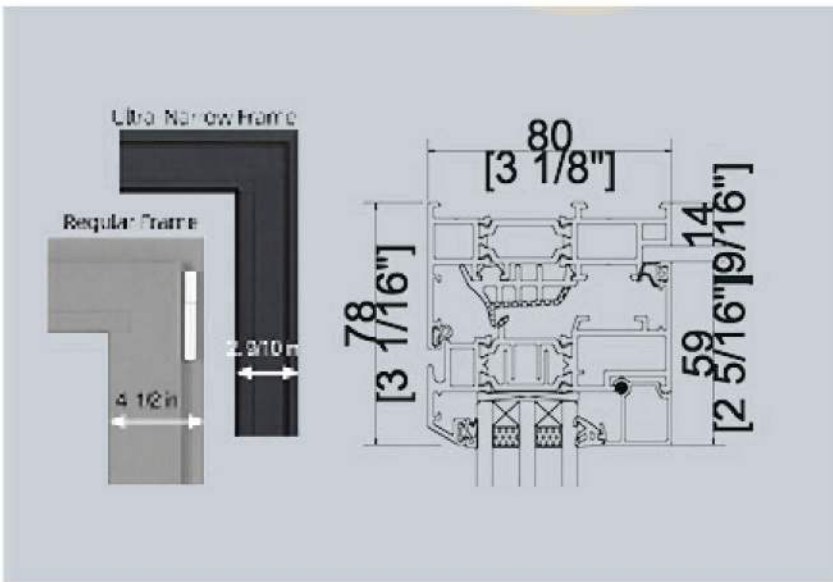
## MINIMALISM SERIES DW80S

### TILT TURN WINDOW



- Frame width reduced by 35% European SOBINCO
- Minimized borders for a maximized
- The System has a variety of optional safety protection design schemes, flexible customer configuration

- 6 Water Tightness
- 8 Air Tightness
- 9 Thermal Insulation
- 3 Sound Proof
- 9 Wind Loading



#### Technical Characteristics

- Profile Thickness: 1.6–2.0 mm
- Visible Width Sash (Inside): 59 mm
- Visible Width Frame (Inside): 14 mm
- Structure Width: 80 mm

#### Hardware



**Sobinco**  
OPENS YOUR LIFE





# Wood Windows



Aluminum-Clad Wood Window, the Most Energy Efficient Window System, Offers the Extreme strength and durability of aluminum frame windows and the warm, comforting aesthetics and classical elegance of real wood. With proper care and maintenance, aluminum-clad windows can last for decades and increase your home's value.





IMAGINATION SERIES DW86S  
TILT TURN WINDOW





# IMAGINATION SERIES DW86S

## TILT TURN WINDOW

### Technical Characteristics

- Profile Thickness (Aluminum): 1.6–2.0 mm
- Visible Width Sash (Inside): 82 mm
- Visible Width Frame (Inside): 42 mm
- Structure Width: 86 mm



### DIFFERENT TYPES

External aluminum cladding provides maintenance free protection of the timber.



WOODEN WINDOW WITH EXTERIOR ALUMINUM CLADDING

Most economical option to have both aluminum and wood features



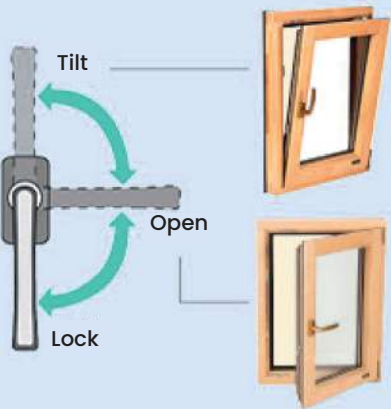
WOOD AND ALUMINUM COMPOSITE FRAME

Professional wood treatment -FINGER JOINT WOOD



ALL WOOD FRAME

### OPENING WAYS



### GERMANY ORIGIN BRAND ANTI-THEFT AND AFTI-SKID FUNCTION HARDWARE SYSTEM

The electroplating handle can be used repeatedly.



The friction stay can even work lastingly more than 200,000 times.



The Multi-Point locks have fewer parts. But per lock point can hold 400 lbs and is more resistant to insect and light infiltration.



### FULL DIVIDED LIGHT GRILLE

Duplex glazing bars combine 28mm wide aluminum exterior and 28mm wide wooden interior, secured to the glass with an additional spacer in between, giving the appearance of divided panes.



Grille Width 1"

### ALUMINUM-CLAD EXTERIORS

Seamlessly Welded Joint are stronger and more artistic.



EXTERIOR

### SCREEN OPTIONS

Different options of screen mesh available



HIGH-VISIBILITY





IMAGINATION SERIES DW163S  
CRANK OUT CASEMENT WINDOW



# IMAGINATION SERIES DW163S

## CRANK OUT CASEMENT WINDOW

### Technical Characteristics

- Profile Thickness (Aluminum):
- Visible Width Sash (Inside): 43 mm
- Visible Width Frame (Inside): 43 mm
- Structure Width: 163 mm



### AMERICAN ORIGIN BRAND ANTI-THEFT AND AFTI-SKID FUNCTION HARDWARE SYSTEM

The smooth control folding hardware systems allow for easy operation with a simple turn of the handle.

The lock is engineered to secure casement windows firmly at multiple points with just one handle. It also features a "Reach out" action that pulls in the sash for a weathertight seal.



### FULL DIVIDED LIGHT GRILLE

Duplex glazing bars combine 28mm wide aluminum exterior and 28mm wide wooden interior, secured to the glass with an additional spacer in between, giving the appearance of divided panes.



### CUSTOM SIZES

Available in custom sizes and without a nailing flange to fit into your existing opening, making installation quick and easy.



### SCREEN OPTIONS

Screen Options







IMAGINATION SERIES DW86S / 163S  
SPECIAL SHAPE WINDOW



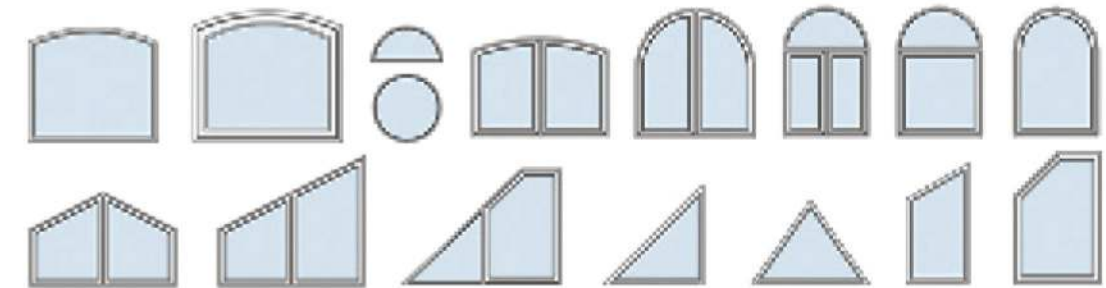


## IMAGINATION SERIES DW86S / 163S SPECIAL SHAPE WINDOW



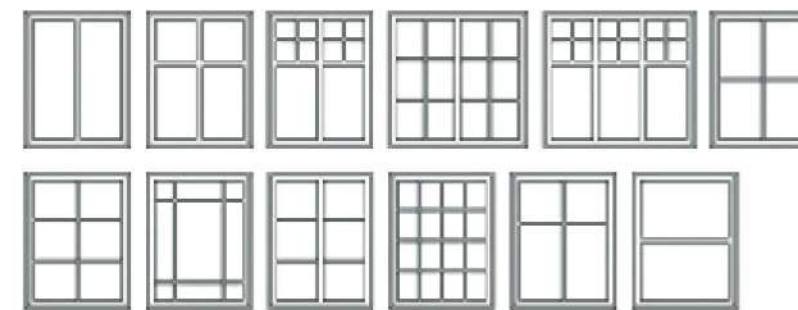
### SHAPES & CONFIGURATIONS

This is not an exhaustive list of combinations, shapes, or sizes. Contact us for further guidance.



### FULL DIVIDED LIGHT GRILLE

Duplex glazing bars combine a 28mm wide aluminum exterior with a 28mm wide wooden interior, secured to the glass with an additional spacer in between—creating the appearance of true divided panes. When you need something truly unique, Duralumi offers tailored solutions and endless opportunities for modifying and customizing our products.



### WOOD COLLECTION

Whichever you choose, our wooden windows will be naturally appealing and true to your home's architectural design.



American Red Oak  
DW-01

American Red Oak  
DW-02

American Red Oak  
DW-03

American Red Oak  
DW-04

American Cherry  
DW-01

American Cherry  
DW-02

American Cherry  
DW-03

American Cherry  
DW-04

[Choose More Colors and Woods...](#)





# Heavy Duty Lift Sliding Doors



ARCHITECT SERIES DW152S  
IMAGINATION SERIES DW210S  
HEAVY DUTY LIFT SLIDING PATIO DOOR





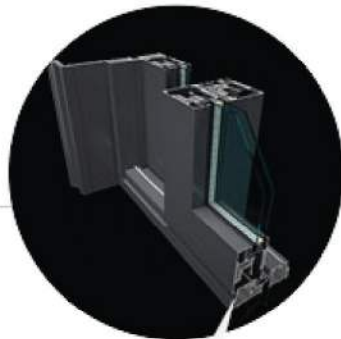
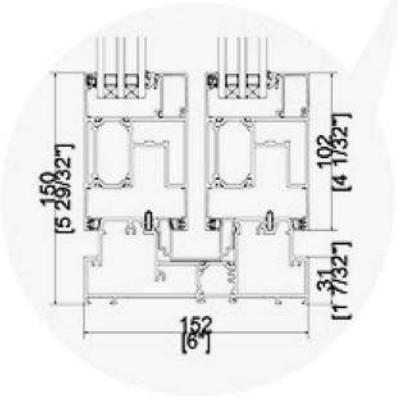
# ARCHITECT SERIES DW152S

## HEAVY DUTY LIFT SLIDING PATIO DOOR

- The load-bearing capacity is up to 400 kg per panel, meeting the demand for larger openings while providing superior visual appeal.
- Various opening configurations are available for setups with fewer than 6 panels, supporting custom design needs.

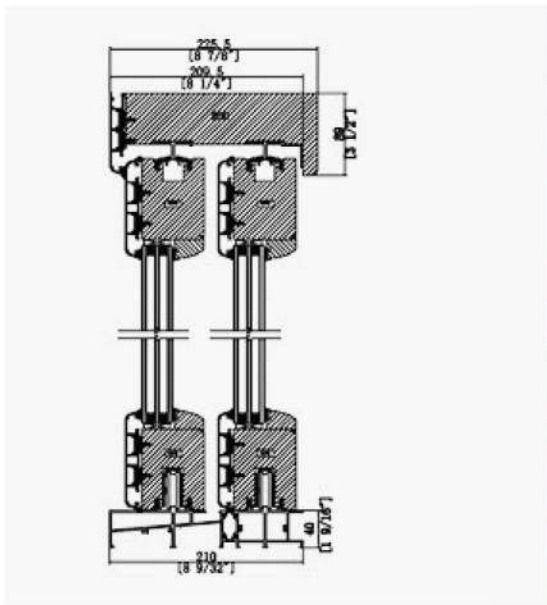
### Technical Characteristics

- Profile Thickness: 1.8–2.3 mm
- Visible Width Sash (Inside): 102 mm
- Visible Width Frame (Inside): 31 mm
- Structure Width: 152 mm





IMAGINATION SERIES DW210S  
HEAVY DUTY LIFT SLIDING PATIO DOOR



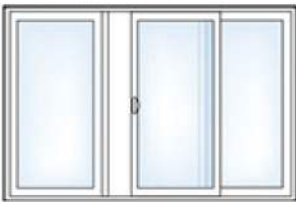
Technical Characteristics

- Profile Thickness: 1.8–2.3 mm
- Visible Width Sash (Inside): 108 mm
- Visible Width Frame (Inside): 56 mm
- Structure Width: 210 mm

Either panel can be active.



Middle panel is active.



Both center panels are active.



Add sidelites and transoms to let more natural light into your home.







Heavy Duty Bi-Folding Doors

ARCHITECT SERIES DW88S  
HEAVY DUTY FOLDING DOOR



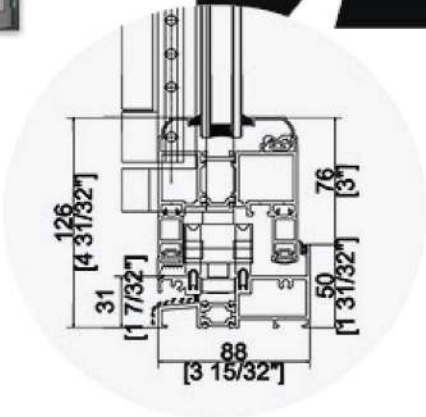


ARCHITECT SERIES DW88S  
HEAVY DUTY FOLDING DOOR



Technical Characteristics

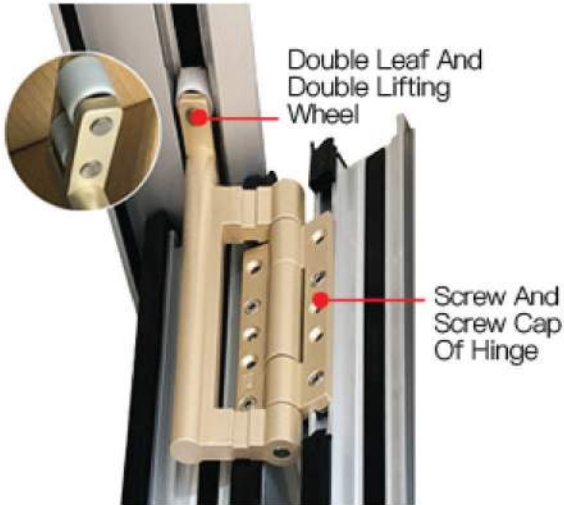
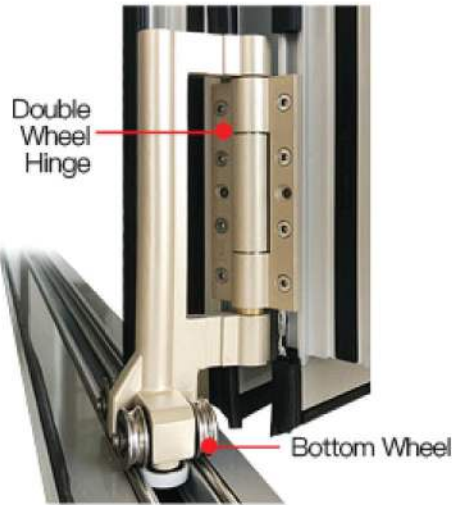
- Profile Thickness: 1.6–2.0 mm
- Visible Width Sash (Inside): 76 mm
- Visible Width Frame (Inside): 50 mm
- Structure Width: 88 mm



WORLD FAMOUS HEAVY DUTY  
FOLDING DOOR HARDWARE

**AVSAYIO**  
Open mind for closing systems.  
Italy Origin Made Top Brand  
Hardware and Accessories

**CMECH**  
Window & Door Hardware







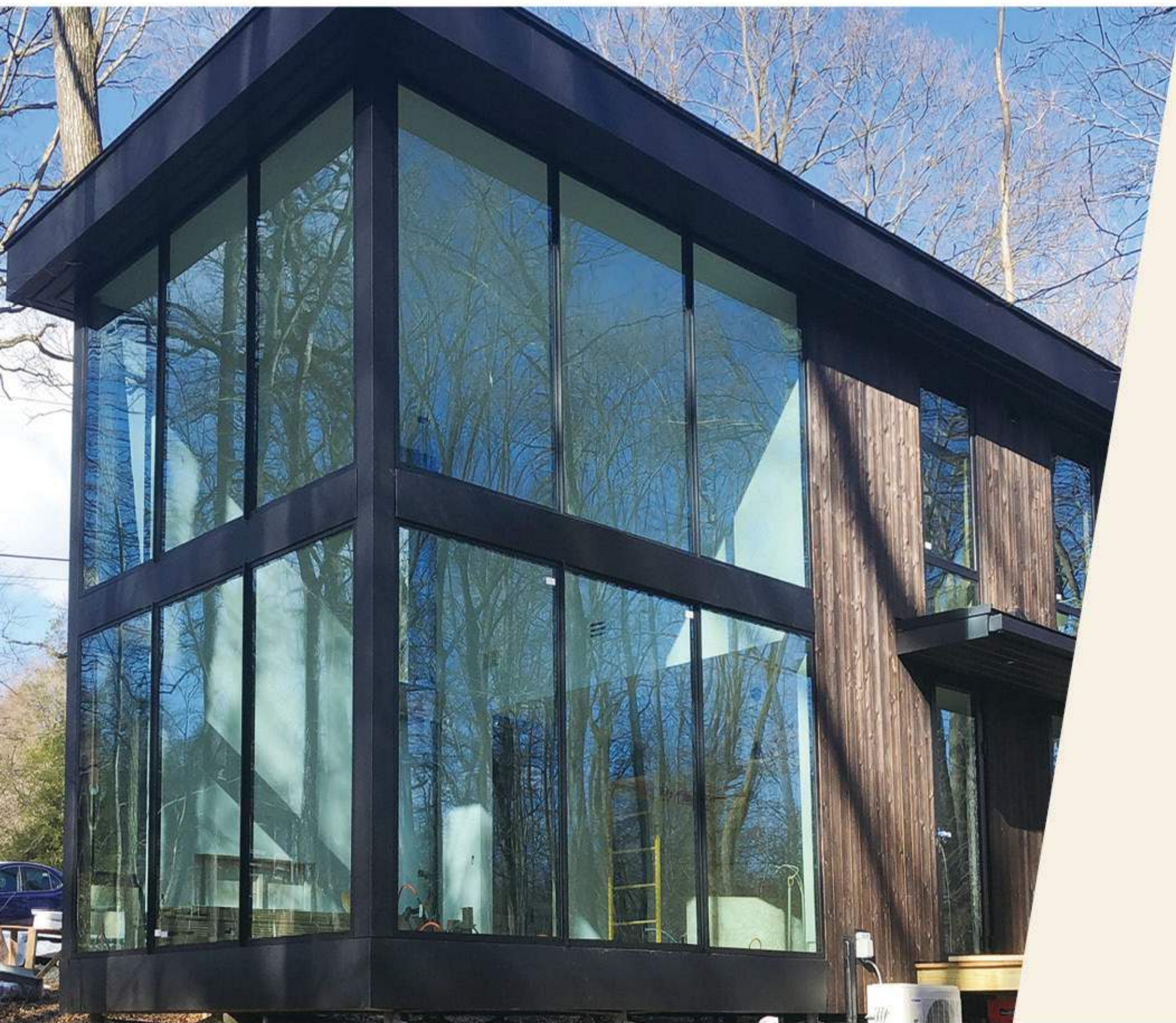
Project Location: Nashville, Tennessee



Product Lines:

– Architect Series DW70s  
Thermal Break Aluminum Windows with Grid





Project Location: Delaware, USA



Product Lines:

– Minimalism Series DW80s

Thermal Break Aluminum Windows & Storefront





Project Location: Dearborn, Michigan, USA



#### Product Lines:

- Architect Series DW70s  
Thermal Break Aluminum Windows
- Architect Series DW152s  
Heavy Duty Lift Sliding Patio Doors





Project Location: Virginia, USA

---

**Product Lines:**

- Imagination Series DW163s Crank Out Casement Windows



Project Location: Louisville, Kentucky, USA

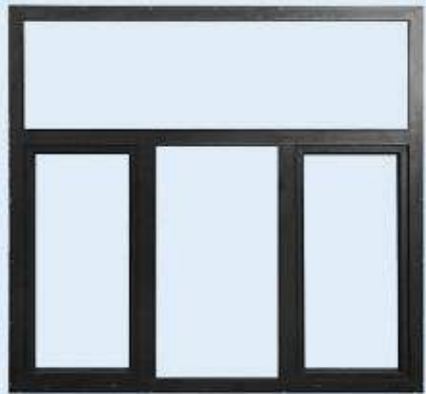
---

**Product Lines:**

- Imagination Series DW163s Crank Out Casement Windows







Project Location: St. Souis, Missouri, USA

Product Lines:

- Architect Series DW70s  
Thermal Break Aluminum Windows
- Architect Series DW152s  
Heavy Duty Lift Sliding Patio Doors







**Project Location: Turks & Caicos Islands, BWI**

**Product Lines:**

- Architect Series DW70s  
Thermal Break Aluminum Windows with Built-in Blinds
- Architect Series DWI52s  
Heavy Duty Lift Sliding Patio Doors





**Project Location: Austin, Texas, USA**



**Product Lines:**

– Architect Series DW70s  
Thermal Break Aluminum Windows – White Interior,  
Black Exterior

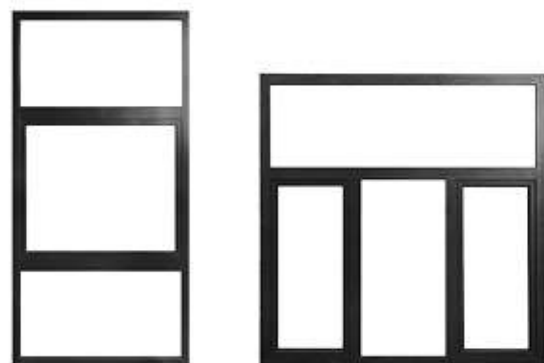




Project Location: Austin, Texas, USA

#### Product Lines:

- Architect Series DW70s
- Thermal Break Aluminum Windows White Interior, Black Exterior



Project Location: Branson, Missouri, USA

#### Product Lines:

- Architect Series DW70s
- Thermal Break Aluminum Windows White Interior, Black Exterior



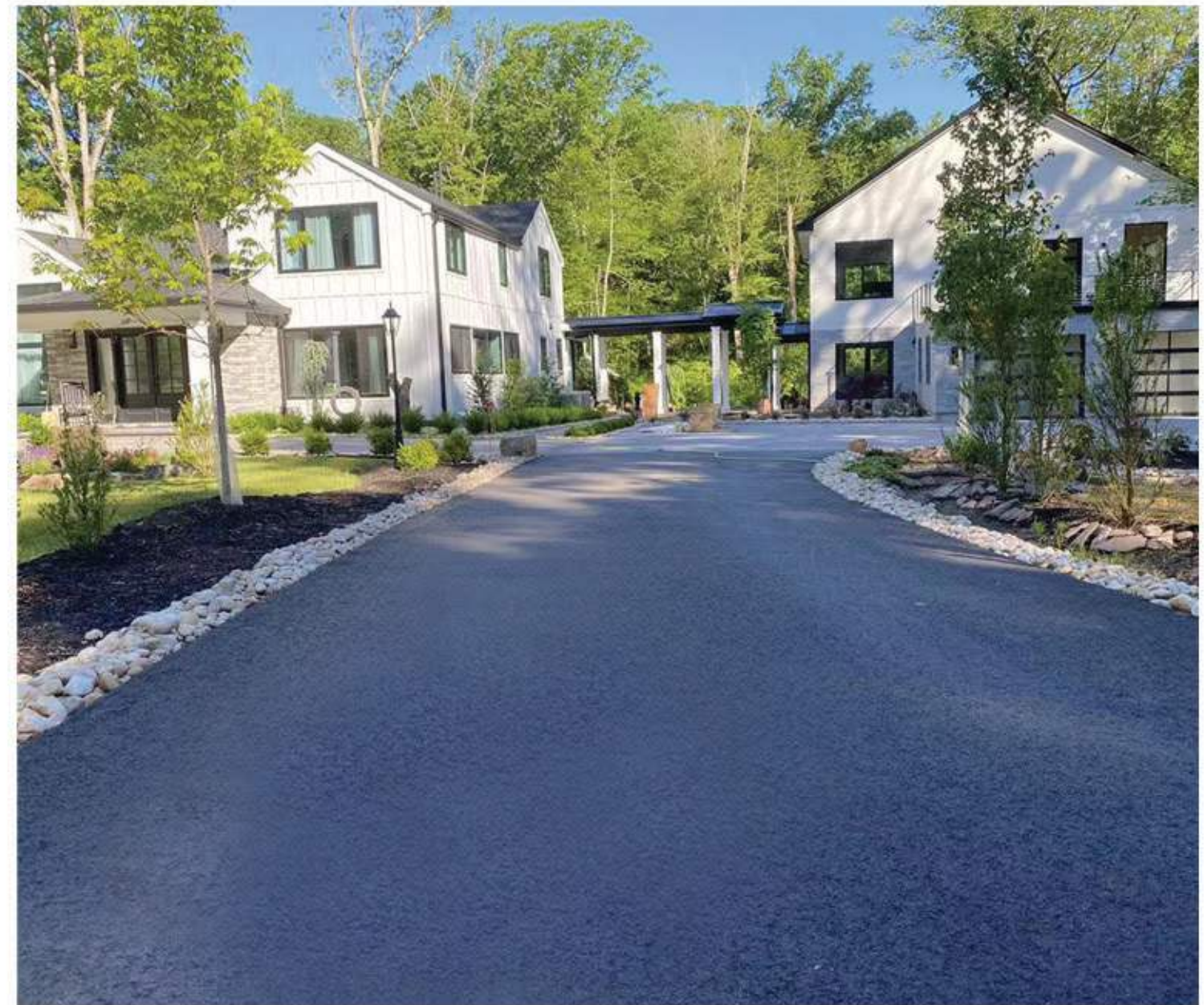




Project Location: San Antonio, Texas, USA

Product Lines:

– Architect Series DW70s  
Thermal Break Aluminum Windows and Doors



Project Location: San Antonio, New Jersey, USA

Product Lines:

– Architect Series DW70s  
Thermal Break Aluminum Windows & Doors







## Project Location: Edmonton, Canada

### Product Lines:

- Architect Series DW70s  
Thermal Break Aluminum Windows
- Architect Series DW152s  
Heavy Duty Lift Sliding Patio Doors



## Project Location: Valleyfield, Canada

### Product Lines:

- Curtain Wall
- Architect Series DW152s  
Heavy Duty Lift Sliding Patio Doors



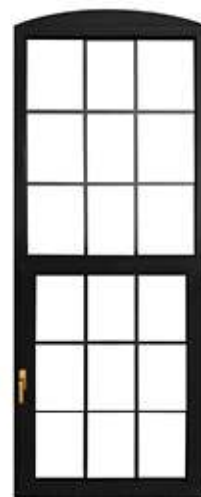




## Project Location: Louisville, Kentucky, USA

### Product Lines:

- Architect Series DW70s
- Thermal Break Aluminum Windows with Grilles



## Project Location: Salt Lake City, Utah, USA

### Product Lines:

- Architect Series DW70s
- Thermal Break Aluminum Windows & Doors
- Architect Series DW88s
- Heavy Duty Folding Doors







## Project Location: Mississauga, Ontario, Canada

### Product Lines:

- Imagination Series DW86s  
Aluminum Red Oak Wood Windows and Doors
- Imagination Series DW86s  
Special Shape Windows
- Architect Series DW70s  
Thermal Break Aluminum Windows



## Project Location: Newport Beach, CA, USA

### Product Lines:

- Imagination Series DW86s  
Aluminum Red Oak Wood Windows and Doors





## Project Location: Hamilton, New Zealand

---

### Product Lines:

- Imagination Series DW86s
- Aluminum Red Oak Wood Windows and Doors



## Project Location: Windsor, Canada

---

### Product Lines:

- Imagination Series DW86s
- Aluminum Red Oak Wood Windows with Built-in Blinds and Doors







Project Location: Virginia, USA

---

#### Product Lines:

- Imagination Series DWI63s  
Crank Out Casement Windows



Project Location: Louisville, Kentucky, USA

---

#### Product Lines:

- Imagination Series DWI63s  
Crank Out Casement Windows

