

## Case Studies

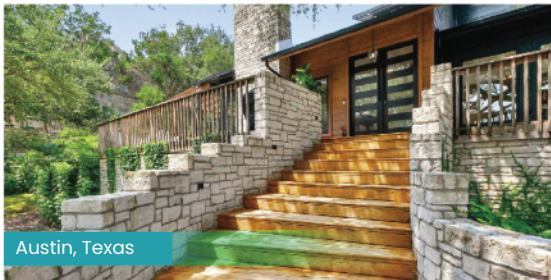
Super-Efficient Comfort with Duralumi  
Aluminum Marvels



Sydney, Australia



Louisiana Baton Rouge, Louisiana



Austin, Texas



CA French Window Replacement Project



MAGNOLIA DOORS  
LUXURY METAL WORKS



**Beyond NA/EU Standards**  
**Windows & Doors You Can Count On**

## CONTACT US

**Official Website:** [www.magnoliadoors.com/duralumi](http://www.magnoliadoors.com/duralumi)

**Email:** [jlfernandez@ams-gr.com](mailto:jlfernandez@ams-gr.com)

**Phone:** (210) 685-9410

### US Office

302 E Nakoma Dr,  
San Antonio, TX 78216

# DESIGN YOUR HOME FOR WELL-BEING

Modern Energy Efficient  
Windows & Doors

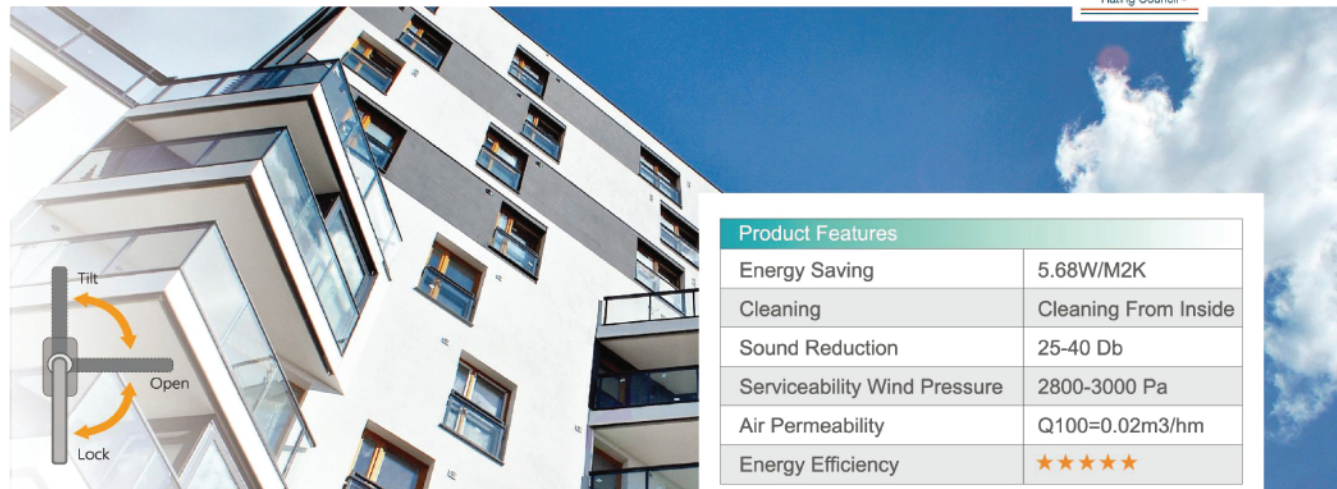
Alu+ 70s



**Official Website:**  
[www.magnoliadoors.com/duralumi](http://www.magnoliadoors.com/duralumi)

**Energy Efficient**

Thermal Break Aluminum Tilt &amp; Turn Window

**Alu+ 70s****Product Features**

Energy Saving	5.68W/M2K
Cleaning	Cleaning From Inside
Sound Reduction	25-40 Db
Serviceability Wind Pressure	2800-3000 Pa
Air Permeability	Q100=0.02m3/hm
Energy Efficiency	★★★★★

**Technical Characteristics**

Aluminum Profile Thickness		1.8mm
Visible Width (Outside)	Frame	63mm
	Sash	50mm
Profile Depth	Frame	70mm
Glass (Thickness)		32mm

**Performance**

Wind Load Resistance	9
Water Tighness	5
Thermal Insulation	8
Sound Performance	4
Air Tightness	8
Daylighting Performance	/

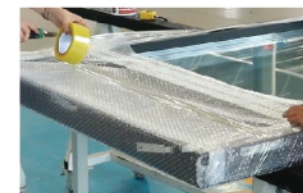
Tilt & turn window is commonly found in Europe and is gaining popularity worldwide. This innovative window features a dual-action hardware system that allows it to tilt open from the top for ventilation, similar to a hopper window, and swing in from the side like a casement window. Tilt & turn windows are known for their superior energy efficiency, security features, and sleek design, making them a popular choice for modern homes and buildings.

**5 Layers Packaging Guarantee No Breakage****1<sup>st</sup> Layer**

Adhesive protective film

**2<sup>nd</sup> Layer**

Buffer bubble film

**3<sup>rd</sup> Layer**

Hardboard

**4<sup>th</sup> Layer**

Stretchable plastic wrap

**5<sup>th</sup> Layer**

Non-fumigation plywood-crate

